

Modern Engineering Plan (MEP) Company Profile

Together Building The Nation



www.meptele.com

ISO 9001:2015
14001:2015
45001:2018



About Us

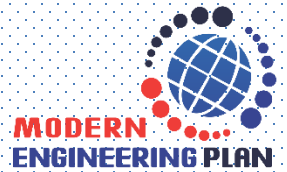


- ❑ MEP was founded in 2013 in Saudi Arabia Riyadh, In 2015, MEP extended its reach across KSA to cover Eastern, Western, Northern and Southern regions through its successful business growth. MEP successfully signed agreement with many Vendors in the market to provide its services to the operators.
- ❑ Our goal is to support businesses in reaching their objectives and enhancing their operations. The company offers a broad spectrum of ICT services, covering IT infrastructure, Telecommunication, Safety and Security, Data Center, and Cybersecurity.

Together Building The Nation



About Us



Vision

Our vision is centered around harnessing the transformative power of IT and Telecommunication to create a connected world that enables businesses, individuals, and communities to thrive. We aspire to be the trusted partner of choice, delivering innovative solutions that drive efficiency, productivity, and connectivity.

Mission

Our mission is to empower businesses and individuals with innovative IT and Telecommunication solutions, enabling seamless connectivity, driving digital transformation, and delivering exceptional value.

Our Team

Our knowledgeable engineers will help you design a custom component for your project's requirements. Our distinguished team brings quality for IT and Telecommunication business operations and expertise in designing, planning, implementing and maintaining in the fields of IT infrastructure and Telecommunication.

Together Building The Nation



MEP set its core values to meet its type of operation along of meeting its customers' needs and requirements to ensure its full compliance to the market's best practices.

Professionalism

- Allowing us to deliver professional services That our customers count on in professional Project management and control

Commitments

- We understand our capabilities and we commit to what we can achieve

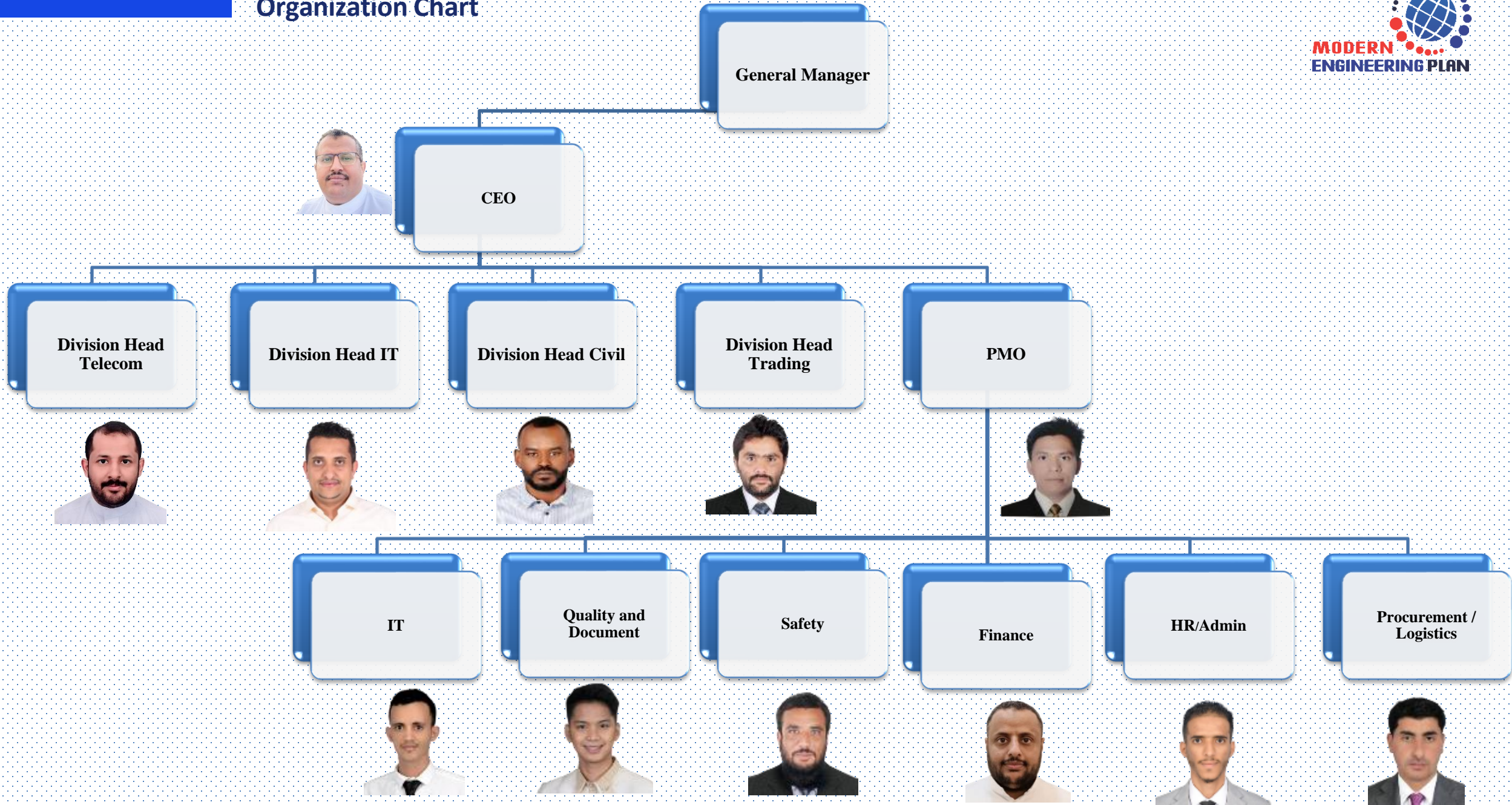
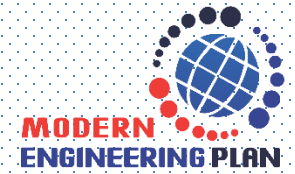
Accountability

- Our customers rely on us on delivering the Required Service at the required time with the required quality

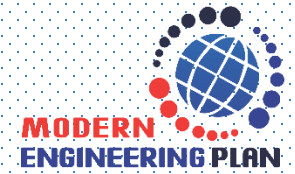
Innovated

- Provide tailored solutions and resolution to ensure meeting our obligations.

Organization Chart



Our Solutions & Services



Telecommunication Implementation



Engineering & Design



Low Current



Network Infrastructure



Network Security Solutions



Infrastructure ISP & OSP



Electrical Implementation



Civil Implementation



Surveillance System



Wi-Fi Solution



Maintenance & Support

Together Building The Nation

Telecommunication Implementation

LOS and TSSR

- Technical Site Survey Report for 2G, 3G, MW, LTE and 5G equipment.

Site Design

- This includes all civil requirements and engineering assessments.

Material Supply

- This covers Poles, Towers, Mounts, Trays, Antenna, telecom Modules, Power modules

Implementation Services

- Telecom (BTS, IBS, RAN, MW, E&M). Configuration and commissioning

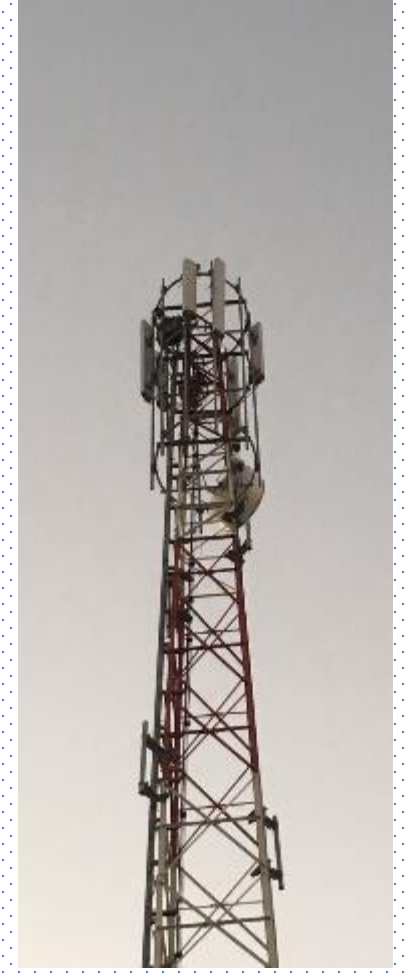
Dismantling Services

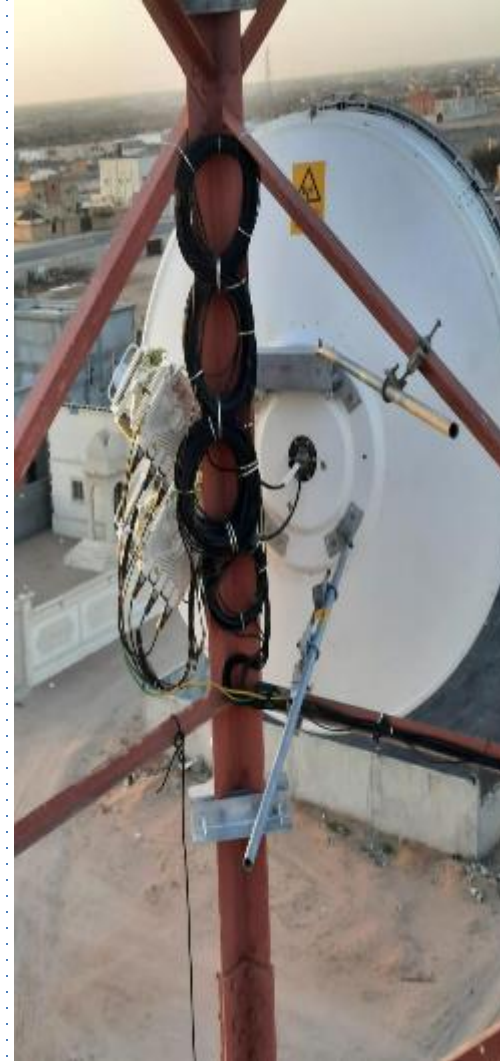
- Dismantle (BTS, IBS, RAN, MW)

Civil Work

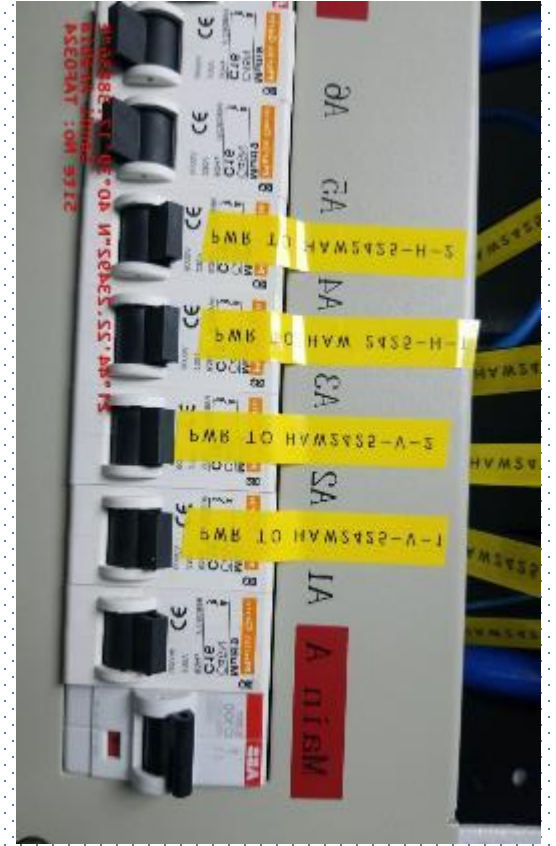
- Towers Erection and Foundation

New Site and RF Installation





MW Link

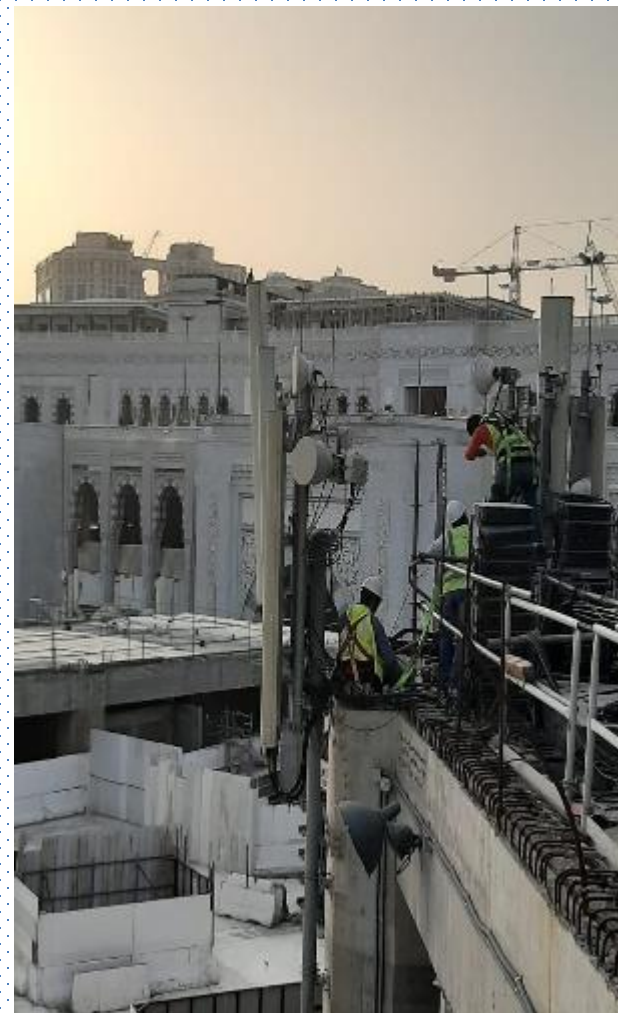


MW Customer



Telecommunication Implementation

Hajj Scope

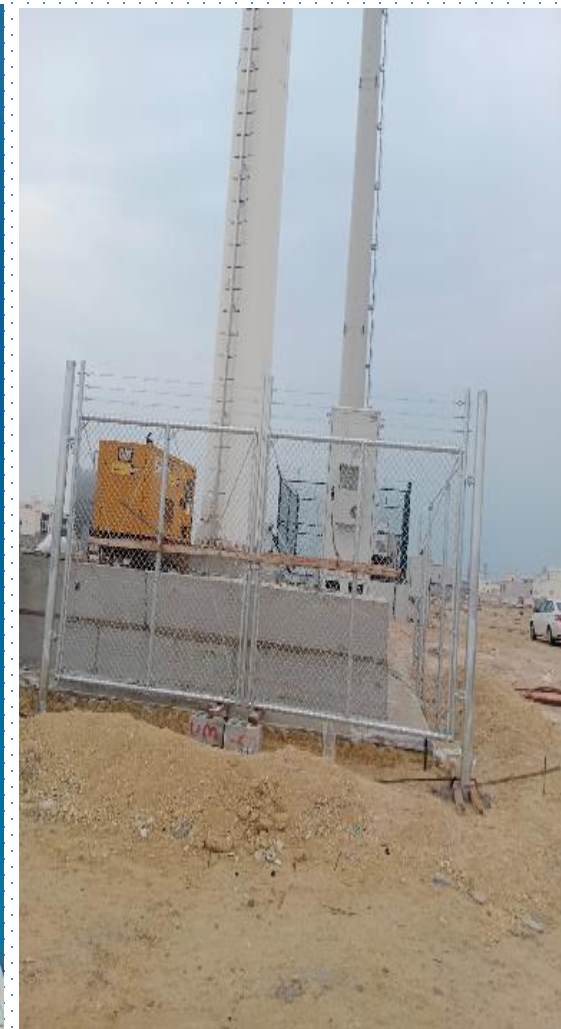


Telecommunication Implementation

IBS installation







Offloading and Dismantling

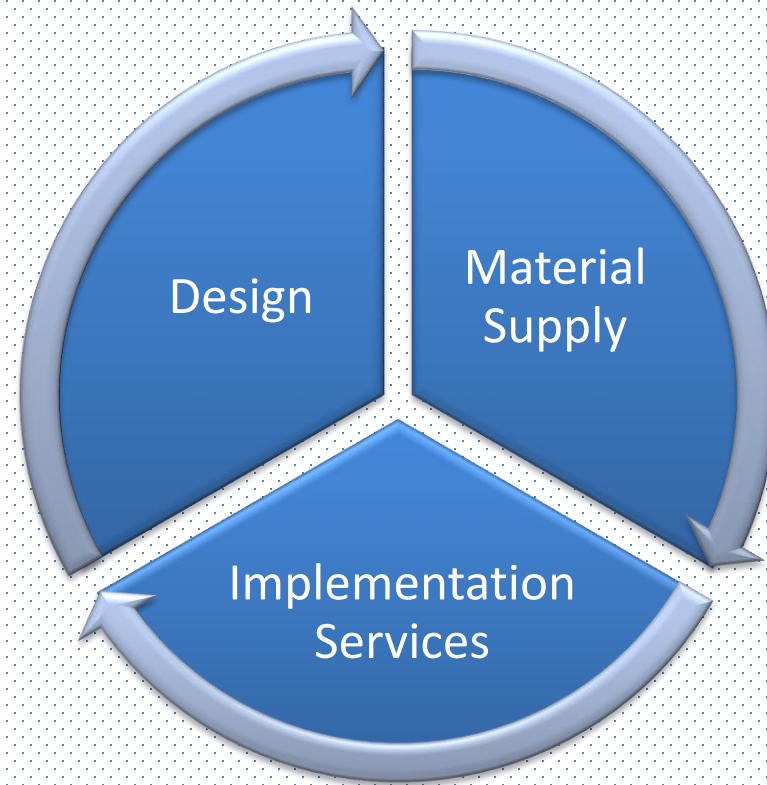


Offloading and Dismantling



Low Current

MEP is one of the KSA's leading company in low current systems, which include: CCTV Systems, Smart Traffic System (SAHER) and Wi-Fi solution.



Together Building The Nation

Low Current

SAHER installation



SAHER installation



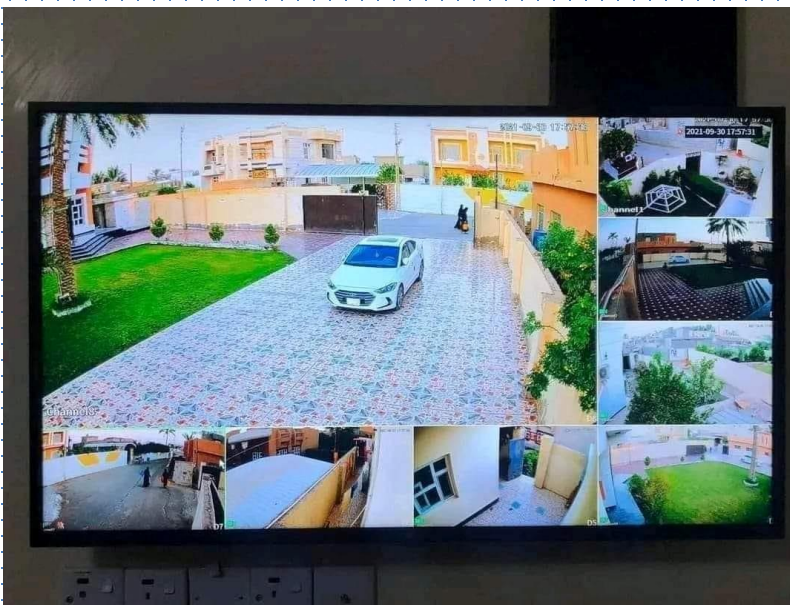
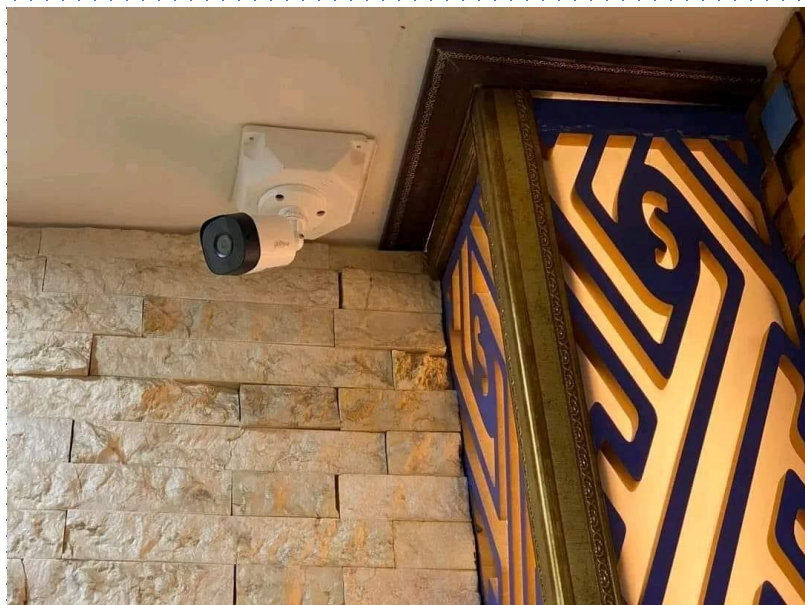
SAHER Configuration



Link ID	Link Name	Link Type	Link Status	Link Action
LINK001	LINK001	LINK001	LINK001	LINK001
LINK002	LINK002	LINK002	LINK002	LINK002

Time	Event Type	Event Time	Event ID	Event Data	Event Status	Event Type	Event ID
8	ADMP	2023/10/21 17:41	2	8305LRB	OK	Link	OK
8	ADMP	2023/10/21 17:38	2	8305LRB	OK	Link	OK
7	ADMP	2023/10/21 17:38	2	8305LRB	OK	Link	OK
8	ADMP	2023/10/21 17:37	2	8305LRB	OK	Link	OK
5	ADMP	2023/10/21 17:36	2	8305LRB	OK	Link	OK

CCTV



Electrical Implementation

MEP implemented many electrical projects in last years such (Smart Metering Project, LED street lighting and

Maintenance: Providing an alternative power source in case of power interruption or breakdown from the main power grid)







Network Infrastructure



Managed Router Services

- Offer end-to-end management of routers, ensuring their optimal performance and security.

Managed Switch Services

- Handle switch configuration, VLAN management, traffic monitoring, and troubleshooting, enabling organizations to maintain a robust and scalable network infrastructure.

Network Design and Implementation

- Analyze your organization's networking needs, recommend the most suitable routers and switches, and ensure a seamless integration with your existing infrastructure.

Acceleration and Optimization Solutions

- Specialize in offering cutting-edge WAN acceleration and optimization solutions, with a key focus on Riverbed technology.

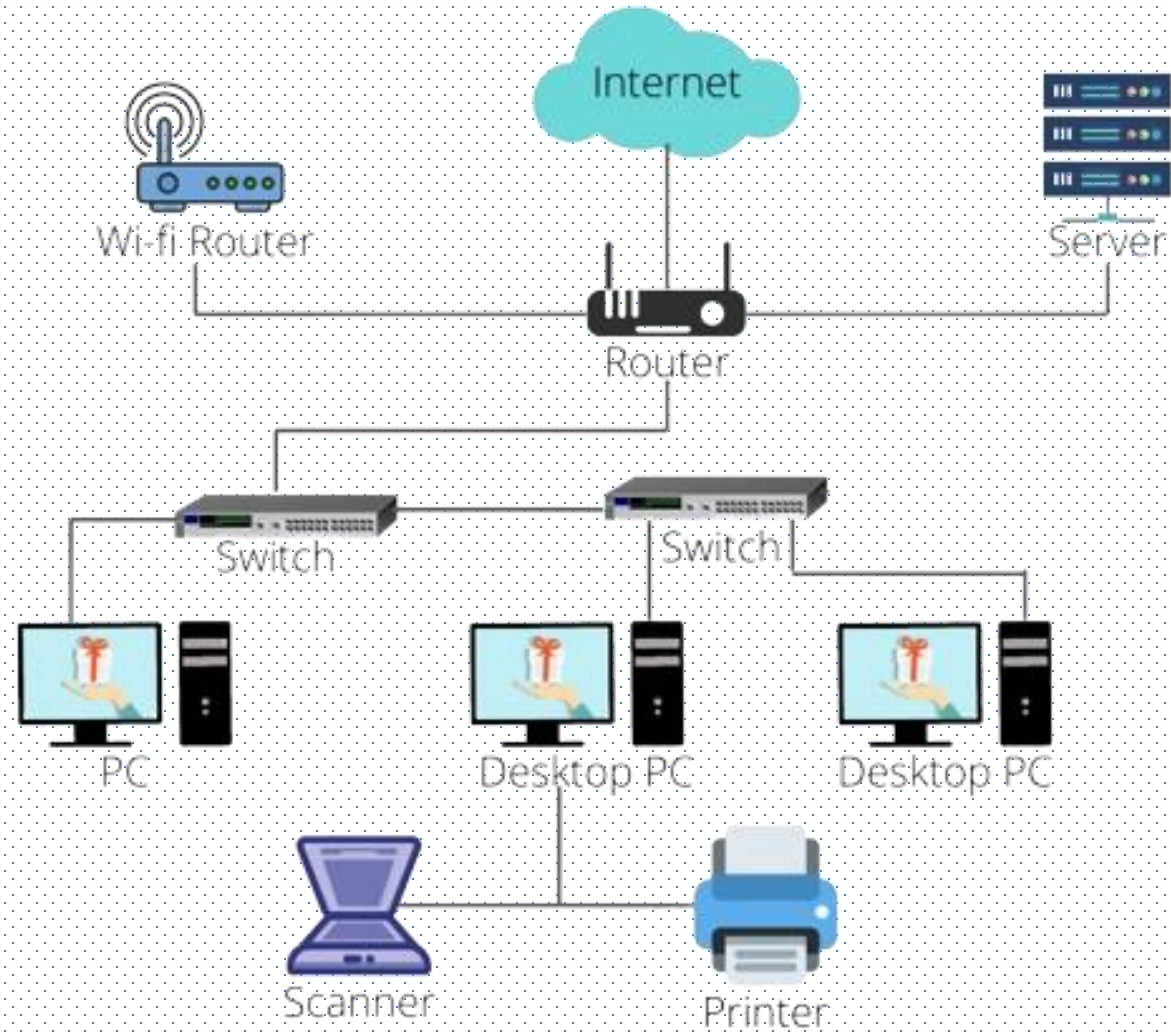
Network Management & Monitoring Solutions

- Our network monitoring solutions enable businesses to have real-time visibility into their network infrastructure.

Network Infrastructure



Network Infrastructure



Antivirus

- Provide top-tier antivirus software , offering real-time protection against a wide range of threats such as viruses, malware, ransomware, and phishing attacks.

Firewall

- Specializes in delivering comprehensive LAN/WAN security solutions utilizing industry-leading technologies. We offer robust security measures to safeguard your network infrastructure against cyber threats and vulnerabilities.

Network Access Control (NAC)

- By leveraging industry-leading technologies , we help you establish comprehensive security policies and enforce access controls effectively. Safeguard your network from potential threats and unauthorized access with tailored NAC solutions backed by advanced technologies.

Wi-Fi Solution

Seamless Connectivity

- Our goal is to ensure consistent coverage by minimizing dead zones and signal drop-offs. Whether in offices, public spaces, or large-scale facilities.

Scalability and Flexibility:

- Our Wi-Fi solutions are designed to be scalable and adaptable, allowing for easy expansion and integration with new devices, applications, and technologies.

High Performance and Speed

- To ensure that users can access and transmit data, stream media, and collaborate in real-time without any interruptions.

Advanced Management and Monitoring

- Our solutions include advanced management tools and platforms that enable centralized control, configuration, and troubleshooting.

Structured Cabling Services

Design and Consultation

- Provide end-to-end structured cabling installation services, ensuring precise and efficient implementation of cabling systems.

Fiber Optic Cabling

- Include Inside Plant (ISP) and Outside Plant (OSP).

Ethernet Cabling

- Providing latest Structured Cabling Systems, such as, CAT6, CAT6A, CAT7 single mode and multi mode cable systems that are capable of Gigabyte speeds and more

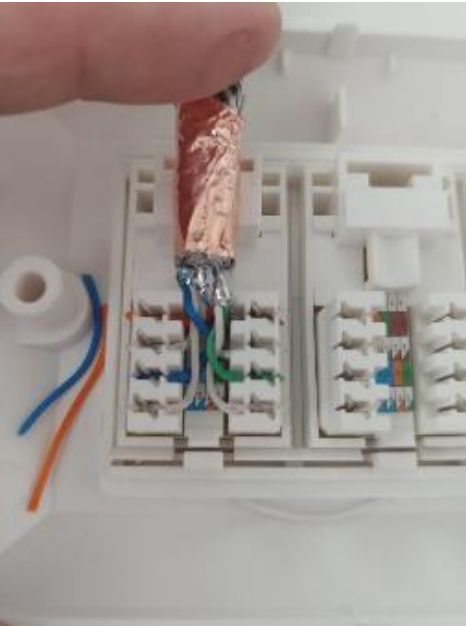
Trenching and Ducting

- Provide to the process of laying cables underground through trenches or protected ducts.

Network Cabinet

- From small businesses to large enterprises, we offer a range of cabinets that cater to your specific networking needs.

Ethernet and Fiber Cabling





Network Cabinet



Trenching and Ducting



Maintenance & Support

IT Infrastructure Maintenance

- Provide proactive maintenance services for IT infrastructure components such as networks, and security devices.

Telecom Network Support (NOC)

- Offer comprehensive support services for telecom networks, including data, and wireless communication systems.

Help Desk Support

- Providing latest Structured Cabling Systems, such as, CAT6, CAT6A, CAT7 single mode and multi mode cable systems that are capable of Gigabyte speeds and more

Hardware and Software Maintenance

- Troubleshoot technical issues, and provide guidance on software applications and hardware devices.

Maintenance & Support

MEP Provides Managed services (MS) and Field Level Maintenance (FLM) to its customers through its highly competent resources for its customers. MEP counts on its competencies and understanding of all KSA logistics to deliver the services to meet the end customer's SLA and KPIs



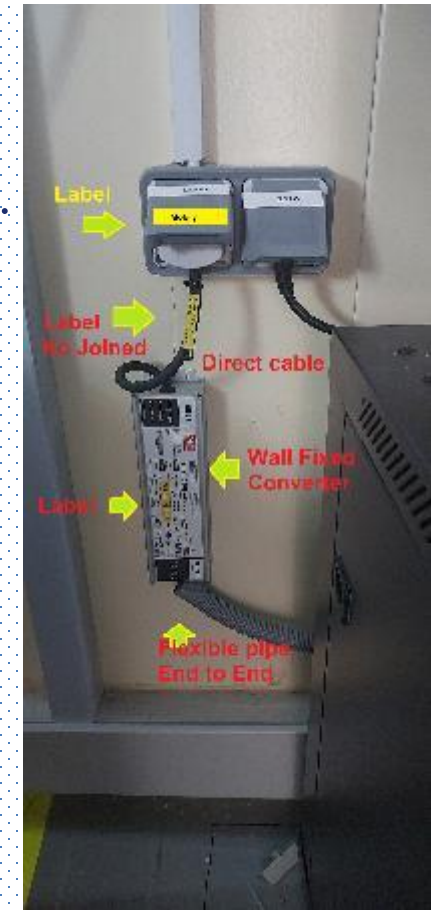
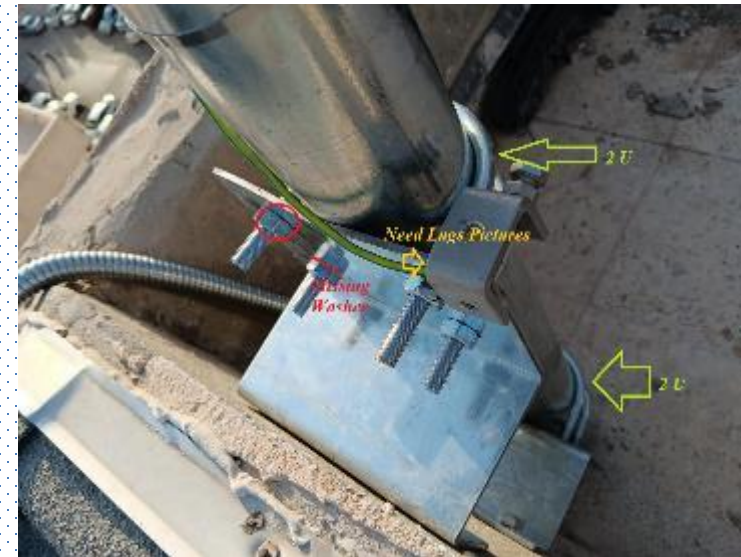
Why MEP ?

- *We believe in our resources and we commit to work that we can execute.*
- *We understand all Markets and its challenges to ensure smooth delivery and overcoming all logistics*
- *We have built a good customer reference list that we are proud retaining for the past couple of years.*
- *We understand our obligations and we believe in true partnership to ensure Win-Win with our partners.*
- *We believe in differentiation and Quality is always our objective.*



Quality

- ❑ Exceed expectations by supplying the finest resources available.
- ❑ Distinguish ourselves by unrivalled quality of service and customer satisfaction.
- ❑ Maintaining a long term relationship with clients.
- ❑ Conducting our business honestly, ethically and with the highest degree of professionalism.
- ❑ To look at all emerging opportunities with enthusiasm and positive attitude.



Together Building The Nation

Quality, Health & Safety Environment



Process Owner: H&S Manager
Title: Site Audit
Process #: H&S-01-41

Version: H&S-01-41
Date: 01/07/2022
Page: 2/4

Process Owner: H&S Manager
Title: Site Audit
Process #: H&S-01-41

Version: H&S-01-41
Date: 01/07/2022
Page: 2/4

Process Owner: H&S Manager
Title: Site Audit
Process #: H&S-01-41

Version: H&S-01-41
Date: 01/07/2022
Page: 2/4



Achievements



- 900 Zain Customer Link and service (2023, still ongoing).
- 3000 NEC-MOBILY DIA Link (Customer Link) (2014, still Ongoing).
- NOKIA Zain Projects (Ph1, Ph2, Ph3 and LTE enhancement, Highway Project,) 2019, still ongoing)
- NOKIA Mobily Modernization (2022, 5 months).
- 840 MW SOPHIA Project Eband and carrier Links in ZAIN-NOKIA (2019, still ongoing).
- Installation Wi-Fi and CCTV for more than 120 Trading Building and Mall (2019, 2022).
- Installation 4300 smart Meter for electricity company (2019, 2021)

Achievements



- *900 Zain Customer Link and service*
- *3000 NEC-MOBILY DIA Link (Customer Link)*
- *1800 NOKIA Zain Projects (Ph1, Ph2, Ph3, Ph4 and LTE enhancement, Highway Project)*
- *145 NOKIA Mobily Modernization*
- *2420 MW Ericsson-MOBILY project.*
- *700 BTS Ericsson-Mobily Project.*
- *1219 Antenna Swap Ericsson – STC.*
- *870 NEC- ZAIN MW SWAP project*
- *300 NEC - ZAIN DIA Link (customer Link)*
- *NOKIA IBS-ZAIN*
- *NEC-ZAIN HHR Project*

Achievements



- *670 Hajj - Transmission Ericsson MOBILY Project*
- *461 HARIS TRM - MOBILY Link*
- *117 NOKIA-ZAIN Dismantling Project (offloading towers)*
- *251 NEC-ZAIN MW USF Project*
- *2 Years NEC-MOBILY NOC*
- *120 Installation Wi-Fi and CCTV for more than Trading Building and Mall.*
- *170 Site CCTV Camera Saher – Tahakom*
- *94 site MOMRA CCTV and Networking*
- *4300 Installation smart Meter for electricity company*
- *6200 Rehabilitation of electrical meters*
- *429 light pole*

Achievements

- *35 km OSP fiber*
- *6 Networking maintenance contract*

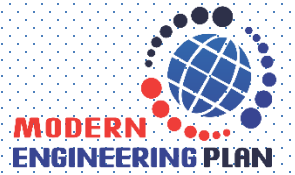


Land Mark Achievements



- *300 Eband and carrier Link (Zain-NOKIA) within 5 Months*
- *120 Ericsson –Mobily Links installed in Hajj project within 20 Days with 2 teams*
- *138 BTS swap installed NOKIA in Hajj within 2 Months*
- *1408 LOS & TSSR NEC-ZAIN*
- *7040 DIA Link NEC-Mobily in 8 years*
- *2746 Dismantled links NOKIA-ZAIN within 11 Months*
- *1200 Ant Hilton-IBS installation for Spicy in 2 Months*
- *70 New site installed USF-ZAIN within 6 Months*

Our Partnership



Together Building The Nation

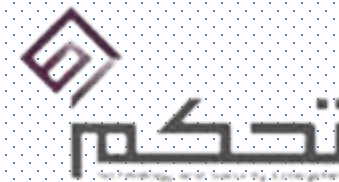
Our Major Customers

NEC



زين
ZAIN

stc



NOKIA



ERICSSON



وزارة الشؤون البلدية
والقروية والإسكان
Ministry of Municipal Rural Affairs & Housing





Jeddah Main Office

Yaaqob Ali
Palasteen Road Mushrefah,
Jeddah 23226, Saudi Arabia
Mobile:+966 591685852
Email : yaaqob@meptele.com



Riyadh :

Muhammad alrefaei
,Abdul Rahman Al-Sulami Street
Al Riyadh, Saudi Arabia
Tel : +966 567014289
mohammed.alrefaei@meptele.com



Qassim :

Haitham Aldhabiani
Tel : +966 507673091
Email: haitham@meptele.com



Tabuk:

Ahmed Ali
Tel : +966 505661203
Email Ahmed@meptele.com



Khobar:

Amir Shahzad
Tel:+966 59 494 6705 3264
Email : Amir@meptele.com



Kamis Mushait :

Ali Suleman
Tel: +966 59 262 7148
Email : Ali@meptele.com

THANK **Y**OU!